

Operating Instructions

Hydrophobic Interaction Chromatography Media Cellufine MAX Phenyl / MAX Phenyl LS

Description

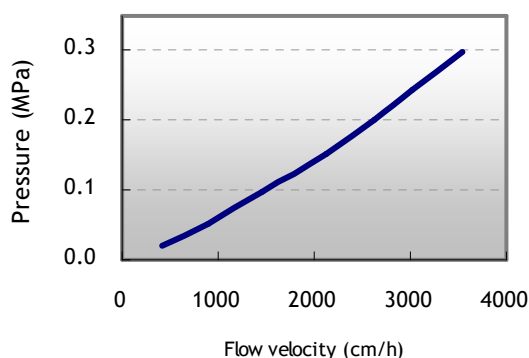
Cellufine MAX Phenyl is useful for the chromatography of hydrophobic proteins. Many proteins have hydrophobic amino acid residues which will interact with the phenyl functional groups. Factors that influence this hydrophobic interaction include salt concentration, temperature, pH, organic solvents and surfactants. Protein adsorption usually occurs at high ionic strength, while elution occurs at lower salt concentrations. This is the opposite and complementary to ion exchange chromatography. This is the opposite of ion exchange chromatography and offers complementary separation benefits.

Physical-Chemical Characteristics

	Cellufine MAX Phenyl	Cellufine MAX Phenyl LS
Support matrix	Highly cross-linked cellulose	
Particle shape	Spherical	
Particle diameter (µm)	ca. 40 – 130	
Ligand type	Phenyl	
BSA capacity (mg/ml)	14	6
BSA elution efficiency (%)	40	90
Polyclonal IgG 10% DBC (mg/ml)	31	19
MW exclusion limit (kD)	1,000	
pH stability range	2 – 13	
Operating pressure	< 0.3 MPa	
Supplied	suspension in 20 % EtOH	

Flow pressure property

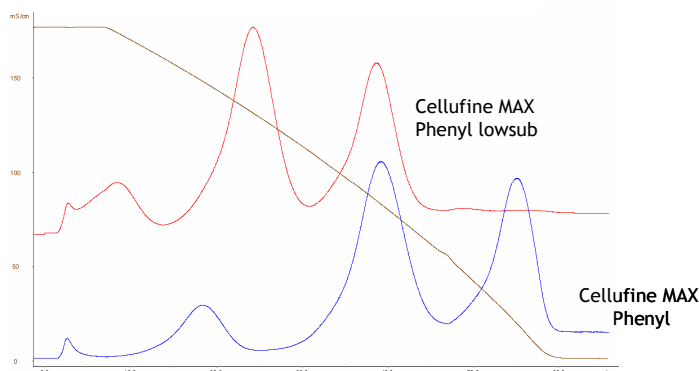
Cellufine MAX Phenyl products have superior flow-pressure properties.



Column: 2.2cm Diam. x 20 cm L
Temperature: 24±1 °C
Mobile phase: water

Retention of model proteins

The figure below shows separation properties of Cellufine MAX Phenyl. Cellufine MAX Phenyl LS has lower ligand density than standard MAX Phenyl.



Column: 6.6mm Diam. x 5cm L
Protein: Ribonuclease A, Lysozyme,
 α -Chymotrypsinogen A
Elution: 10 mM PB (pH7.0) 1.5 \rightarrow
0 M $(\text{NH}_4)_2\text{SO}_4$ gradient

Column Packing

1. Calculate volume required for the desired bed dimension.
2. Prepare a 40 – 60 % (v/v) slurry in 50 mM sodium phosphate, 1 M $(\text{NH}_4)_2\text{SO}_4$, at pH 7.0.
3. Gently stir or place under vacuum to degas.
4. With column outlet closed, carefully pour the slurry into the column. Depending on the volume, a filler tube may be necessary.
5. With the inlet open to release air, insert and affix the top adjuster assembly at the slurry interface.
6. Open column outlet and begin pumping buffer at a rate 20-30 % higher than the operational flow rate.
7. After the bed stabilizes, close the column outlet. Then with the inlet open, reposition the end cell on top of the bed. Equilibrate with 10 column volumes adsorption buffer before sampling.

Operating Guidelines

General Operation

Equilibrate column with 2 – 5 volumes of elution buffer (low salt concentration), then wash with the same amount of loading buffer. The typical loading buffer is 50 mM of sodium phosphate, pH 7.0 containing 0.5 – 2.5 M Na_2SO_4 , $(\text{NH}_4)_2\text{SO}_4$ or NaCl. Adsorption strength is a function of salt concentration, pH and temperature. In general, high concentration promotes adsorption. Desorption (elution) is then accomplished by lowering the salt concentration. For more information, see References.

Sample Preparation and Load

Samples are ideally prepared in loading buffer. Filtration may be required to remove insoluble matter. If necessary, buffer exchange may be accomplished using diafiltration or desalting chromatography. Protein adsorption and recovery will vary with each packing. Usually, in terms of binding strength, Cellufine MAX Phenyl > MAX Phenyl LS > Butyl. The sample (prepared in the loading buffer) is applied after washing of column with the loading buffer. After loading of sample, flush with 5 column volumes of loading buffer to remove unbound material. Subsequently, bound product can be eluted.

Flow Rate and Elution

The recommended flow pressure for hydrophobic Cellufine MAX media is less than 0.3MPa. Generally, low flow rates are used for binding and elution, while higher flow rates are acceptable for washing and regeneration steps.

Desorption of bound material is accomplished by step or gradient elution with low concentration of salt (e.g., less than 0.5 M). The use of chaotropic agents (e.g., KSCN), surfactants (e.g., Octyl Glucoside, CHAPS, Triton X, Chaps or Tween), denaturing agent (e.g., guanidine hydrochloride, urea, ethanol) will improve the recovery of tightly adsorbed proteins.

Chemicals and Physical Stability

pH 2 – 13, when operated at room temperature. Stable in most salts (NaCl, $(\text{NH}_4)_2\text{SO}_4$, etc.) and most detergents (SDS, Tween etc) and other chemicals (70% ethanol, 30% isopropyl alcohol, 6M Guanidine hydrochloride and Urea). The products can be cleaned using 0.5 N NaOH.

Autoclavable in suspension at neutral pH for 20 minutes at 121 °C.

Regeneration

Flush the column with 2 - 5 bed volumes of 0.5N NaOH. In some cases, an additional flush with 2 - 5 bed volumes of 70 % EtOH/30 % DIW /0.1 M AcOH followed by distilled water may be required to remove adsorbed lipids.

Storage

Short term (2 weeks or less), bulk and column can be stored at room temperature with 2 M $(\text{NH}_4)_2\text{SO}_4$ or 0.05 N NaOH. Long term storage should be in neutral buffer containing 0.02 % sodium azide or 20 % EtOH at 25 °C or lower temperature. Do not freeze.

Shelf Lifetime:

5 years from date of manufacture

References

1. Harris, E.L.V. and Angal, S., *Protein Purification Methods: A practical Approach*. New York: Oxford University Press, 1989.
2. Janson, J.-C. and Ryden, L., *Protein Purification: Principles, High Resolution Methods, and Applications*. 2nd ed. New York: John Wiley & Sons, Inc., 1998

Product Ordering Information (Catalogue No.)

Media type	Pack Size					
	Mini-column 1 ml x 5	Mini-column 5 ml x 5	100ml	500ml	5 lt	10 lt
Cellufine MAX Phenyl	20700-51	20700-55	20700	20701	20702	20703
Cellufine MAX Phenyl LS	20800-51	20800-55	20800	20801	20802	20803

JNC CORPORATION

Chemical Division Life Chemicals Department

2-1, Otemachi 2-Chome, Chiyoda-ku, Tokyo 100-8105, Japan

Phone +81-3-3243-6150, Fax+81-3-3234-6219

E-mail: cellufine@jnc-corp.co.jp

<http://www.jnc-corp.co.jp/fine/en/cellufine>

TERMS AND CONDITIONS OF SALE

1. **Acceptance**-Buyer's placement of this order shall create a contract subject to and expressly limited by these terms and conditions. Acceptance may only be made on the exact terms and conditions hereof and if additional or different terms are proposed by Buyer, such response shall constitute a counteroffer. **THE TERMS OF THIS CONTRACT SHALL SUPERSEDE ANY CONFLICTING TERMS CONTAINED ON BUYERS PURCHASE ORDER OR ANY DOCUMENT OR INSTRUMENT SUBMITTED BY BUYER.**

2. **Prices, Taxes and Payment** - All prices are firm unless otherwise agreed to in writing. JNC reserves the right to change the prices and specifications of its Products at any time without notice. Any tax, duty, custom or other fee of any nature imposed upon this transaction by any federal, state or local governmental authority shall be paid by Buyer in addition to the price quoted or invoiced. In the event JNC is required to prepay any such tax, Buyer will reimburse JNC. Payment terms shall be net 30 days after shipment by JNC. An interest charge equal to 1½% per month (18% per year) will be added to invoices outstanding beyond 30 days after shipment. In addition JNC reserves the right to require C.O.D. payment terms from any Buyer whose account is overdue for a period of more than 60 days or who has an unsatisfactory credit or payment record. JNC may also refuse to sell to any person until overdue accounts are paid in full.

3. **Delivery and shipment** - JNC will make every effort to ship the Products or provide the services hereunder in accordance with the requested delivery date, provided, that JNC accepts no liability for any losses or for general, special or consequential damages arising out of delays in delivery. Shipment of all Products shall be F.O.B. point of distribution by JNC; identification of the Products shall occur when they leave JNC's point of distribution, at which time title and risk of loss shall pass to Buyer. All shipment costs shall be paid by Buyer and if prepaid by JNC the amount thereof shall be reimbursed to JNC.

4. **Inspection** - Buyer shall be responsible for inspecting all Products shipped hereunder prior to acceptance, provided, that if, Buyer shall not have given JNC written notice of rejection within 30 days following shipment to Buyer, the Products shall be deemed to have been accepted by Buyer.

5. **Disclaimer of Express and Implied Warranties** - The Products shall be covered by the applicable JNC standard warranty. **NO OTHER EXPRESS OR IMPLIED WARRANTY IS MADE WITH RESPECT TO THE PRODUCTS. JNC EXPRESSLY EXCLUDES THE IMPLIED WARRANTIES OF MERCHANTABILITY AND OF FITNESS FOR A PARTICULAR PURPOSE.** Any model or sample furnished to the Buyer is merely illustrative of the general type and quality of goods and does not represent that the Products will conform to the model or sample. Buyer's remedies under JNC's warranty shall be limited to repair or replacement of the Product or component which failed to conform to JNC's warranty. **JNC shall not be liable for any consequential damages or economic loss or property damage incurred by Buyer.**

6. **Returned Goods** - No Products shipped under this contract may be returned without the express prior authorization of JNC. All returns of Products are subject to a restocking charge. No returns will be authorized after 120 days following shipment to Buyer.

7. **Technical Advice** - JNC may, at Buyer's request, furnish technical assistance, advice and information with respect to the Products if and to the extent that such advice, assistance and information is conveniently available. It is expressly agreed that there is no obligation to provide such information which is provided without charge at the Buyer's risk and which **is provided subject to the disclaimers set forth in paragraph 5 above.**

8. **Agents, etc.** - No agent, employee or other representative has the right to modify or expand JNC's standard warranty applicable to the Products or to make any representations as to the Products other than those set forth in JNC's product literature and any such affirmation, representation or warranty, if made, should not be relied upon by Buyer and shall not form a part of this contract.

9. **Fair Labor Standards** - JNC represents that the Products or services provided hereunder were produced and/or performed in compliance with the requirements of all sections of the Fair Labor Standard Act of 1938, as amended.

10. **Equal Employment Opportunity** - JNC is an Equal Opportunity Employer. It does not discriminate in any phase of the employment process against any person because of race, color, creed religion, national origin, sex, age, veteran or handicapped status. The JNC Equal Opportunity Certificate, which is mailed annually to all vendors and vendees, is incorporated into this contract by reference.

11. **Modifications, Waiver, Termination** - This contract may be modified and any breach hereunder may be waived only by a writing signed by the party against whom enforcement thereof is sought.

12. **Governing Law** - This contract shall be governed by and construed in accordance with the laws (other than those relating to conflict of laws questions) of the Commonwealth of Japan.

13. **Arbitration** - Any and all disputes or controversies arising under, out of or in connection with this contract or the sale or performance of the Products shall be resolved by final and binding arbitration in Tokyo under the rules of the Japan Arbitration Association then obtaining. The arbitrators shall have no power to add to, subtract from or modify any of the terms or conditions of this contract. Any award rendered in such arbitration may be enforced by either party in either the courts of the Commonwealth of Japan District Court for the District of Japan, to whose jurisdiction for such purposes JNC and Buyer each hereby irrevocably consents and submits.