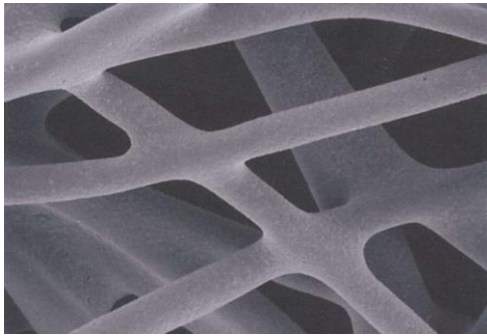


Note 1: Three-dimensional structure. Enlarged photo of fibers forming the filter.



Note 2: Types and characteristics of filters

The filters are characterized in that all the fibers are thermally bonded, which eliminates deterioration in accuracy caused by opening.

■CLEAL®CP Filter

- Material: Polypropylene/polyethylene
- Characteristics: high acid and alkali resistance due to polypropylene/polyethylene material
- Applications: Paints, Resins, Slurry



■CLEAL®GF Filter

Overseas standard size product of CLEAL®CP Filter made of the same material



■CLEAL®CPH Filter

- Material: Polyester/polyester copolymer
- Characteristics: PET material enables a wide range of application in oil-based systems
- Applications: Oils (ATF), Adhesives

