

User friendly microbial detection !

Sanita-kun[®]

=The ready-to-use cultural medium sheet
for the microbial detection =

Chisso Corporation

e-mail sanita-kun@chisso.co.jp

web <http://www.chisso.co.jp/sanita/>

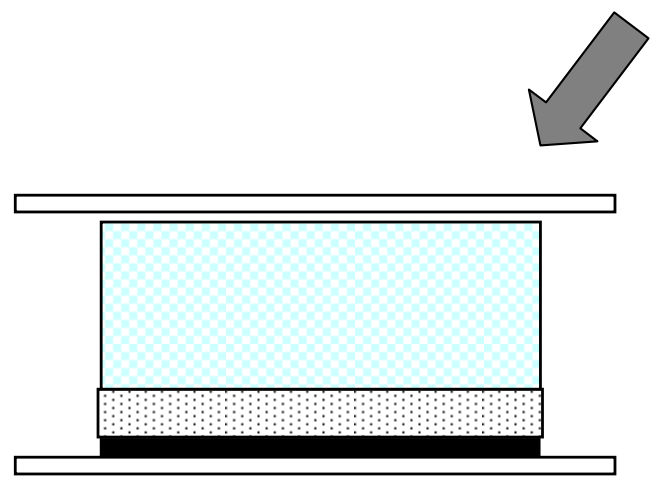
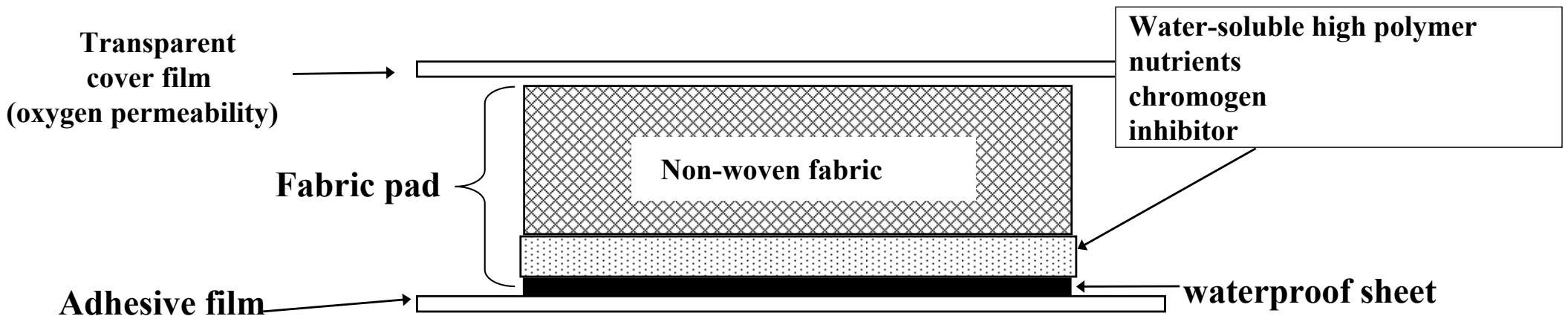
What is the SANITAKUN?

SANITAKUN is our original product Sheet Medium.

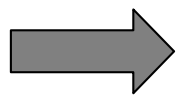
SANITAKUN is a ready-to use cultural medium sheet equipped with non-woven fabric.

SANITAKUN provides easy and accurate detection of microorganisms to customers as an alternative to agar plate.

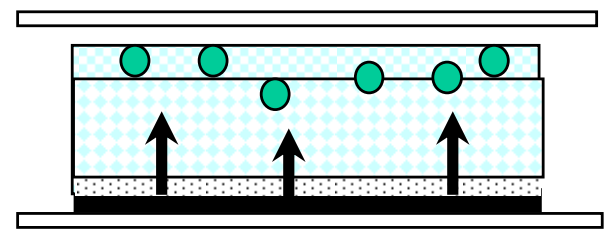
The structure of SANITAKUN



Apply 1ml sample solution



incubate



Applied sample solution diffuses throughout the entire pad in a few seconds.

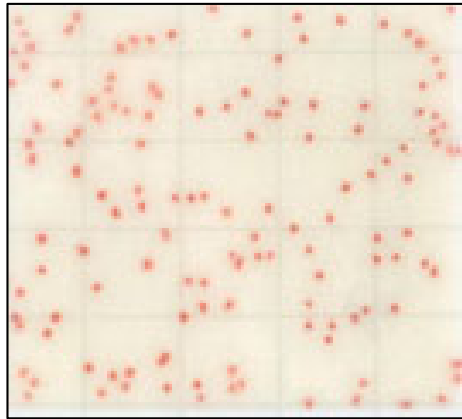
High viscous solution dissolves, it pushes up microorganism to the fabric surface. The Microorganism grows and forms colony on the surface and it colors by chromogen.

SANITAKUN line-ups

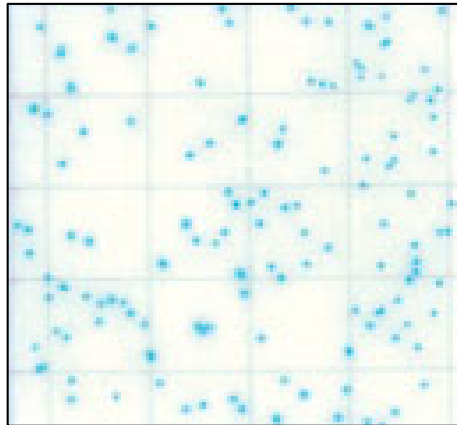
SANITAKUN	Chromogenic principal	incubation
Aerobic Count	Chromogen(TTC) colors red by a microbial metabolism.	35°C 48hr
Coliform	Chromogen colors blue or blue-green by β -galactosidase that coliform generates.	35°C 24hr
Yeast & Mold	Chromogen colors blue or indigo blue by esterase that yeast or mold generates.	25°C 48hr
Staph. aureus	Chromogen colors black spot and blue halo around the spot.	35°C 24hr
E.coli/Coliform	Chromogen colors blue or blue-green by β -galactosidase that coliform generates. Chromogen dyes indigo blue by β -glucuronidase that E.coli generates.	35°C 24hr
Salmonella	Chromogen colors blue by α -galactosidase that salmonella generates. (Chromogen dyes indigo blue by β -galactosidase that Coliform generates.)	35°C 24hr

SANITAKUN chromogenic characteristic

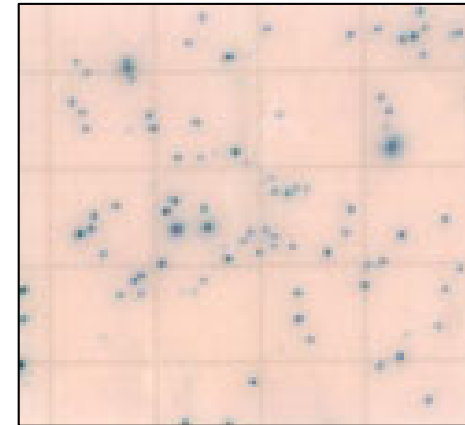
Aerobic Count



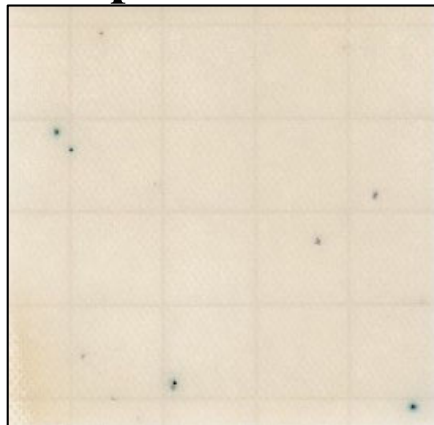
Coliform



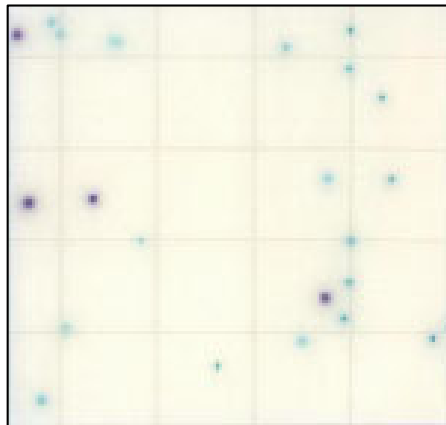
Yeast & Mold



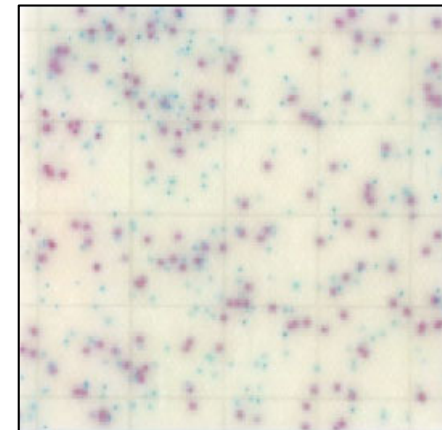
Staph. aureus



E.coli/Coliform



Salmonella



Concept of SANITAKUN

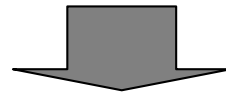
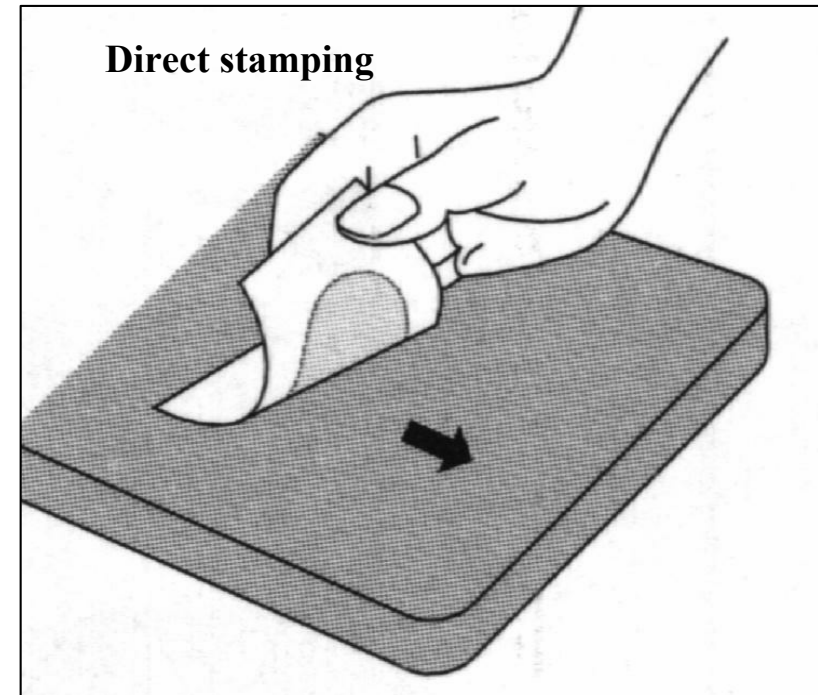
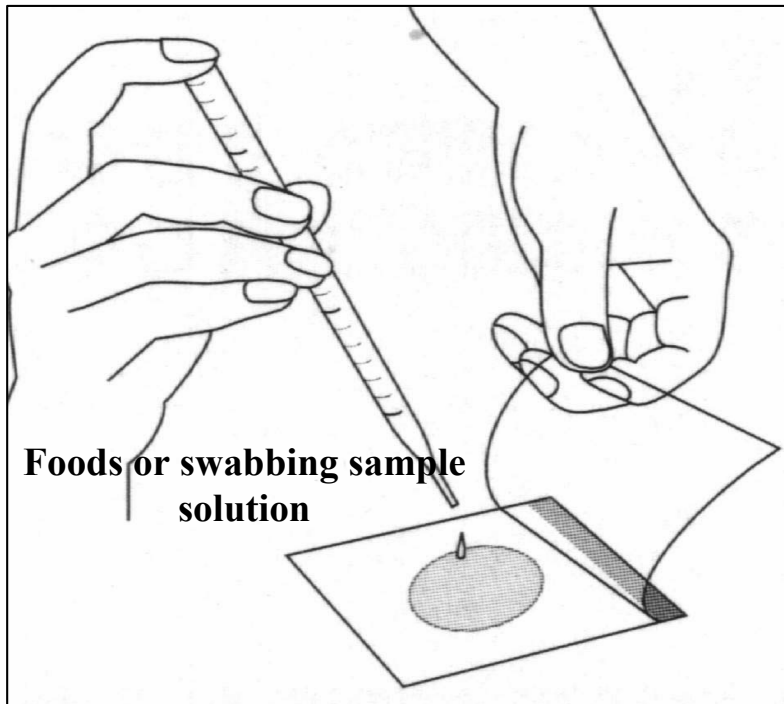
User friendly

Care free

Reliable

- 1) Easy to use**
- 2) Multi applications**
- 3) Accurate & Quantitative**
- 4) Reliability**
- 5) Ready-to-use & Time saving**
- 6) Space saving & Small volume of waste**
- 7) Long validity**

Characteristics 1:
Easy to use



Incubation

Characteristics 2 :
Multi applications



Swabbing



Water filtrate



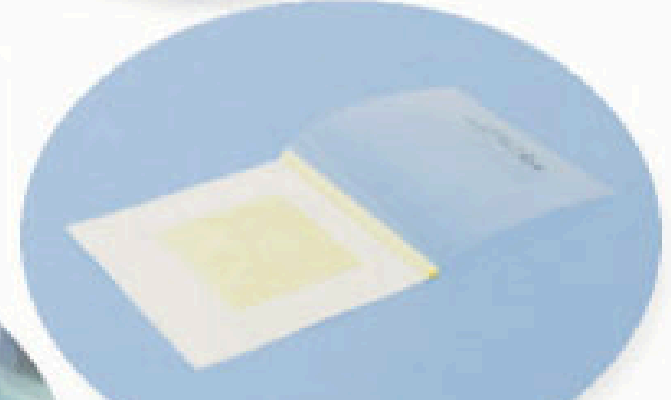
Direct stamping



**Swabbing test used
swabbing kit**



Food sample test



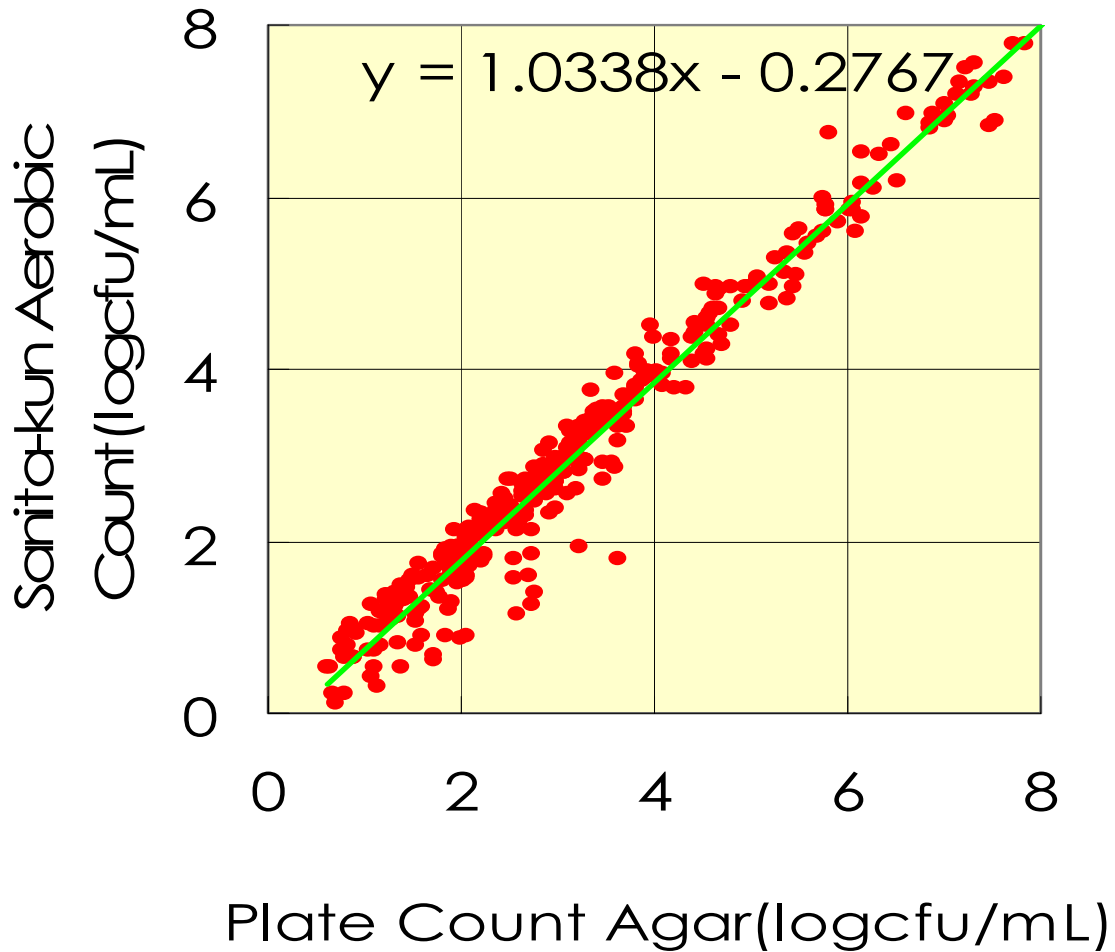
Fall out test

Characteristics 3 :

Accurate & Quantitative

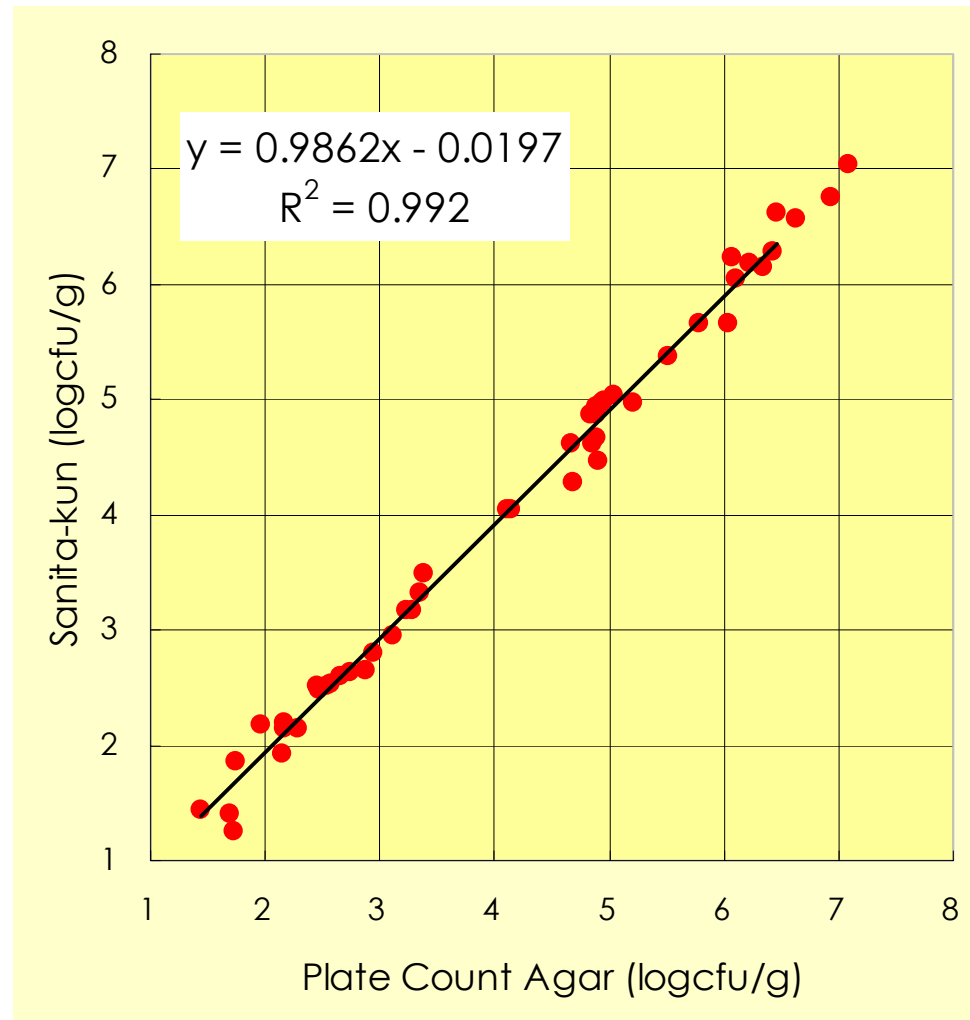
SANITAKUN Aerobic Count

Incubation for 48h



SANITAKUN Aerobic count

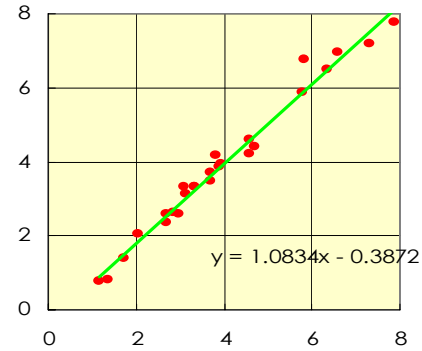
Comparison between SANITAKUN Aerobic Count and agar plate / AOAC Official Method 966.23



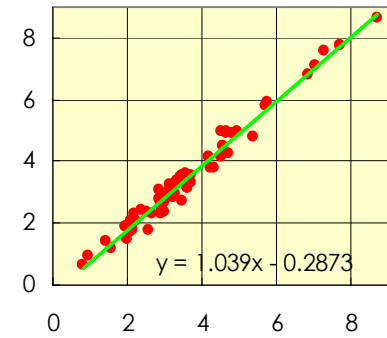
SANITAKUN Aerobic Count

(X;log agar plate,Y;log SANITAKUN)
35°C,2days

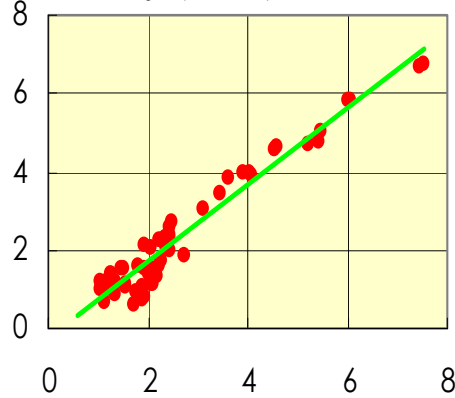
Fresh produce (n=52)



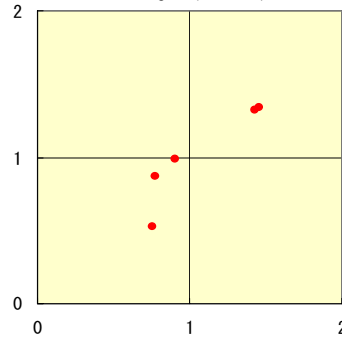
Sea foods (n=77)



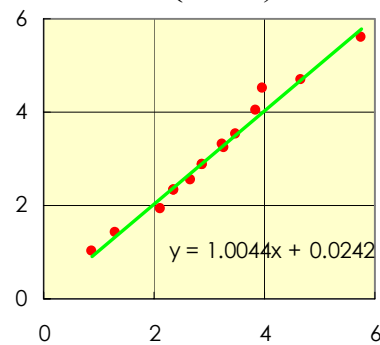
Candy (n=83)



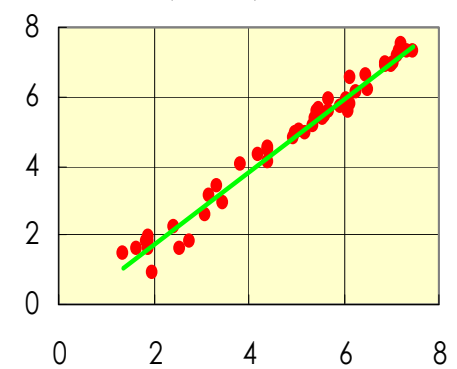
Dairy (n=5)



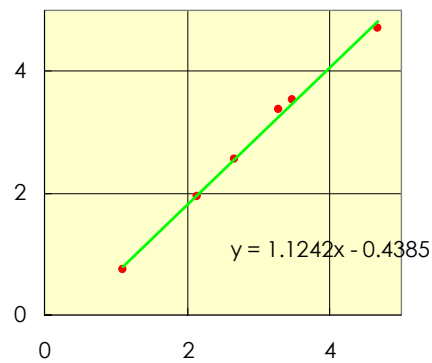
Grain(n=16)



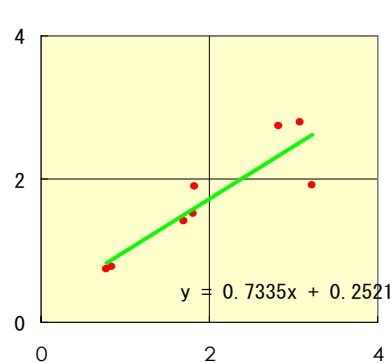
Meat(n=29)



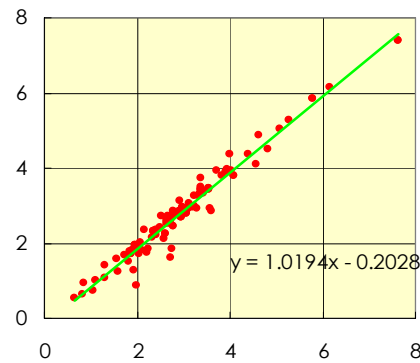
Bean(n=6)



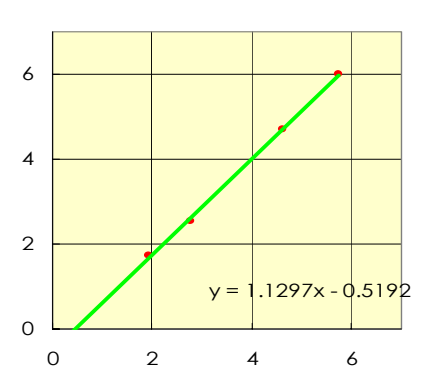
Seaweed(n= 9)



Daily dish(n=127)

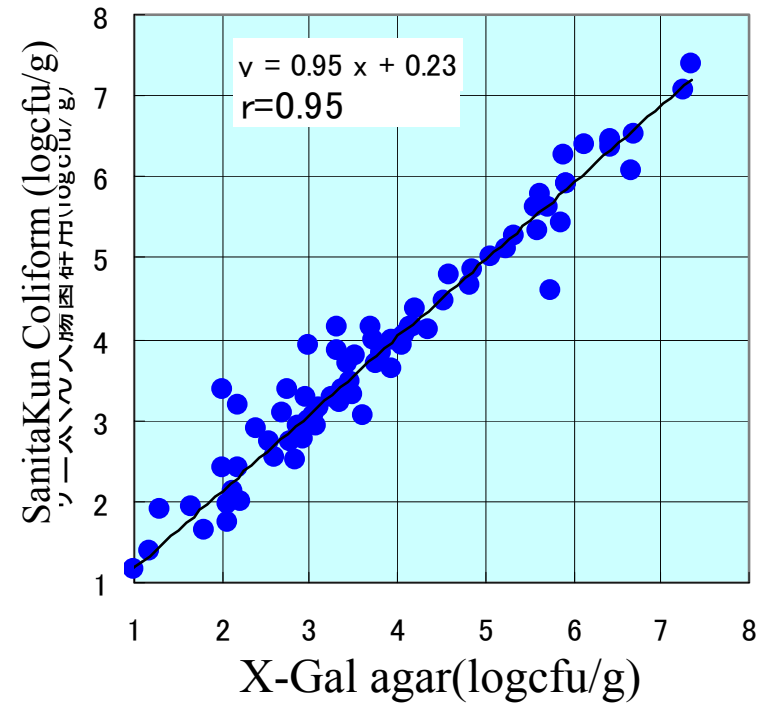
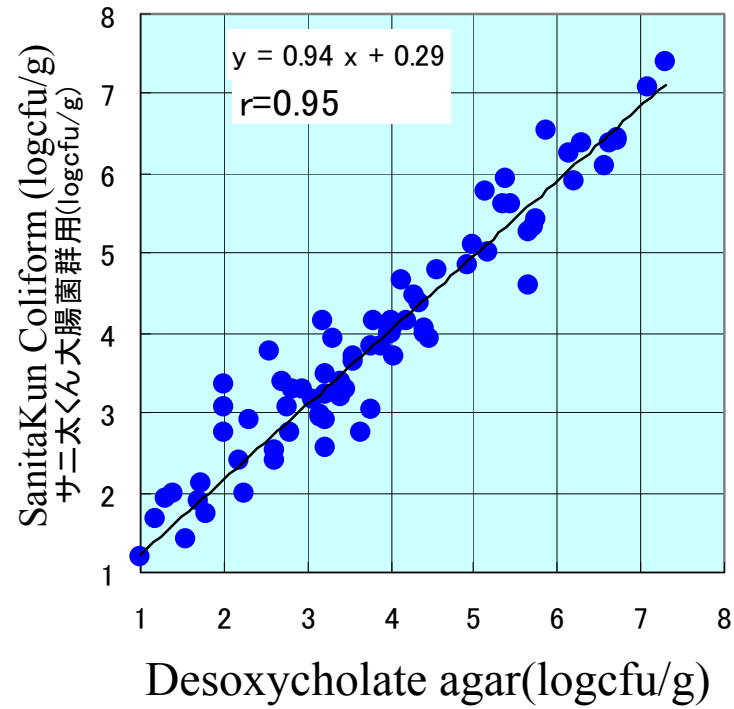


Egg(n=4)



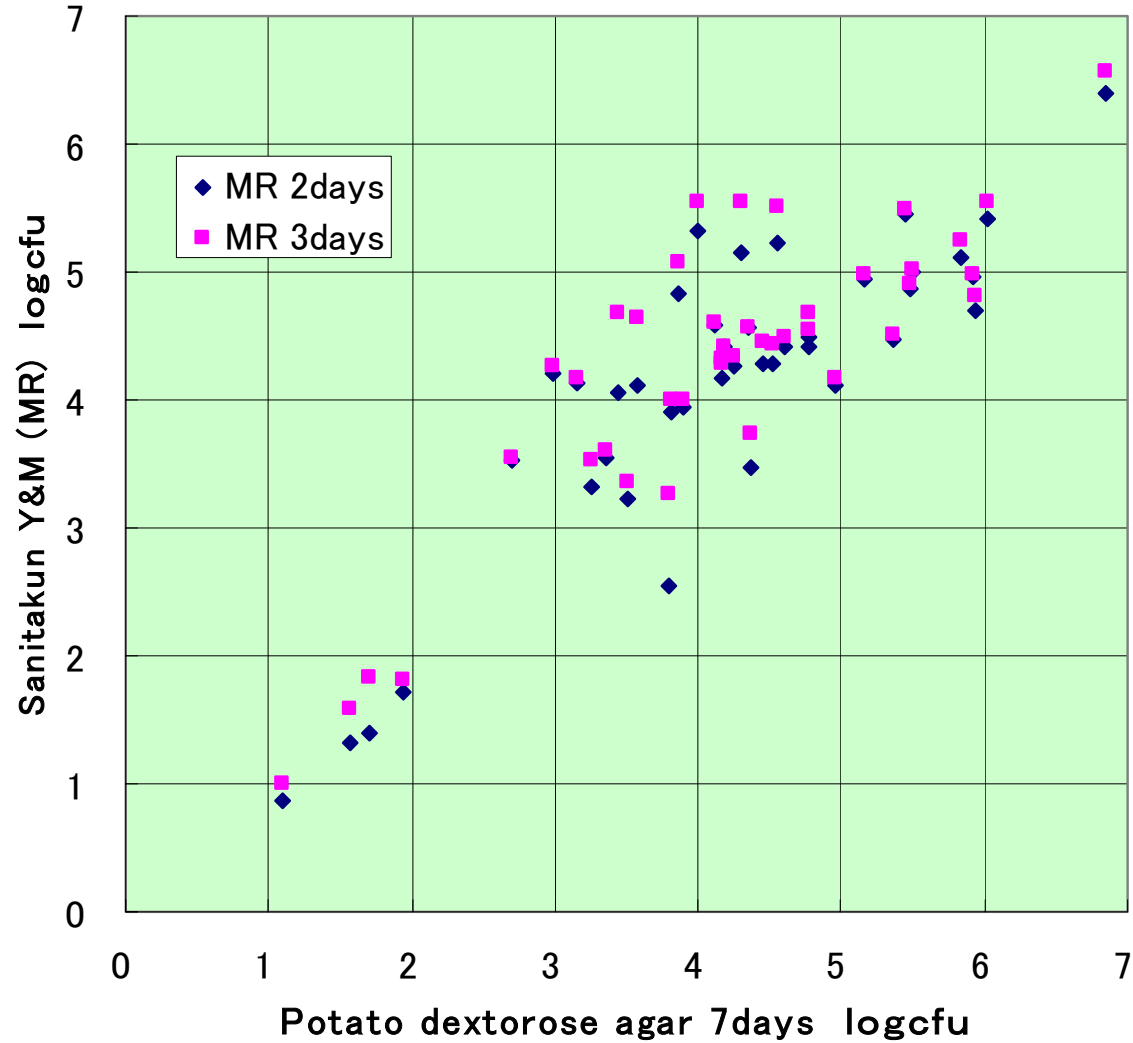
SANITA-KUN Coliform

Comparison between SANITAKUN and agar



SANITA-KUN Yeast & Mold (Rapid Type)

Comparison between SANITAKUN and PDagar



The international certification

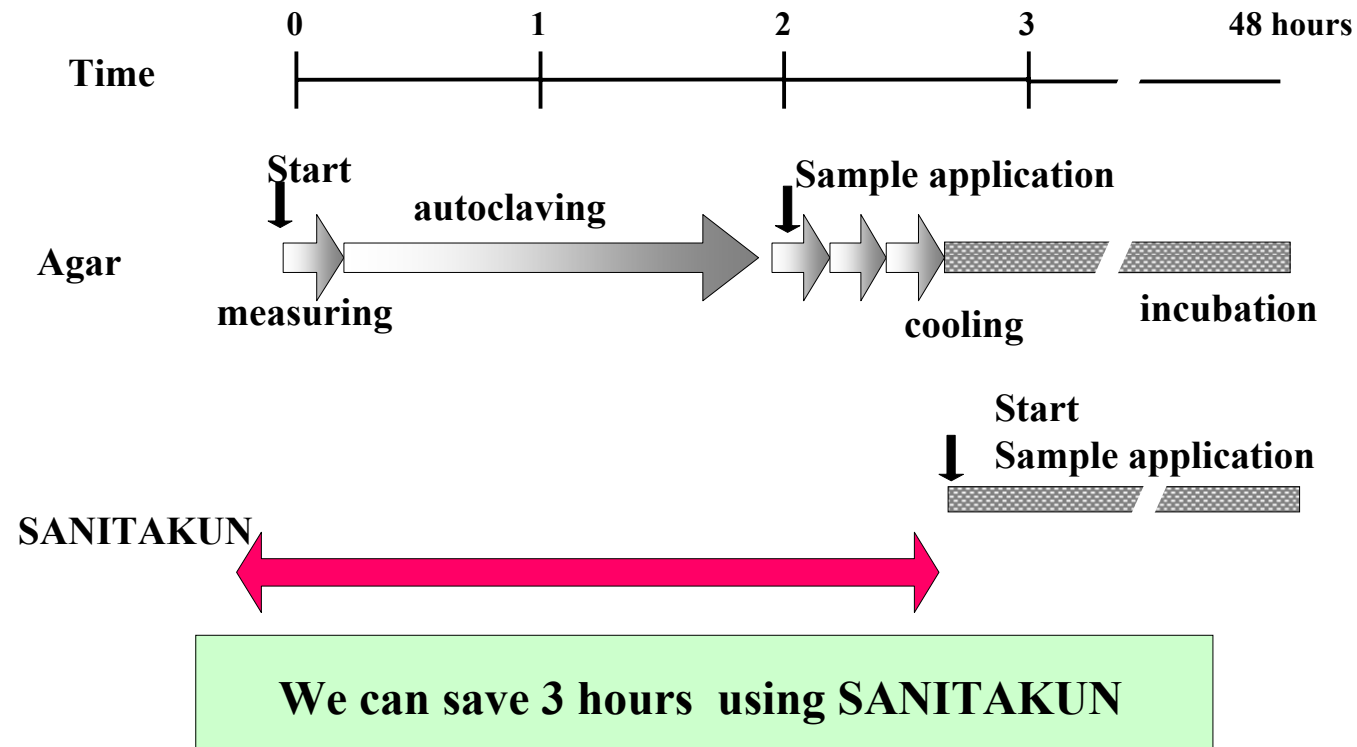
- **SANITAKUN Aerobic Count, Coliform were approved by AOAC Research Institute as the Performance Tested Method.**
- **SANITAKUN E.Coli/Coliform was approved by AOAC Research Institute as the Performance Test Method on this July**
- **We will try to apply a validation such a AOAC PTM approval about SANITAKUN other item, then too.**

The official recognition in Japan

**SANITAKUN was appeared on the Food Sanitation Inspection Guide Line which official guide line of Japan.
(Aerobic Count, Coliform, Staph. aureus, E.coli/Coliform)**

Characteristics 5:
Ready-to-use & Time saving

**Comparison of preparation time between
SANITAKUN and agar plate (100 tests)**



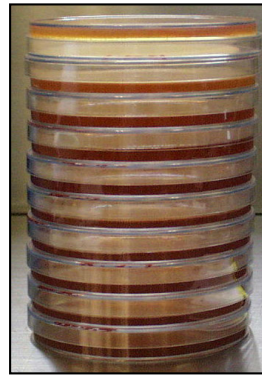
Characteristics 6:

Space saving & Small volume of waste

Space saving

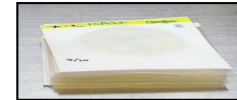
1/10
to agar plates

10 agar plates



=

10 SANITAKUNs sheets

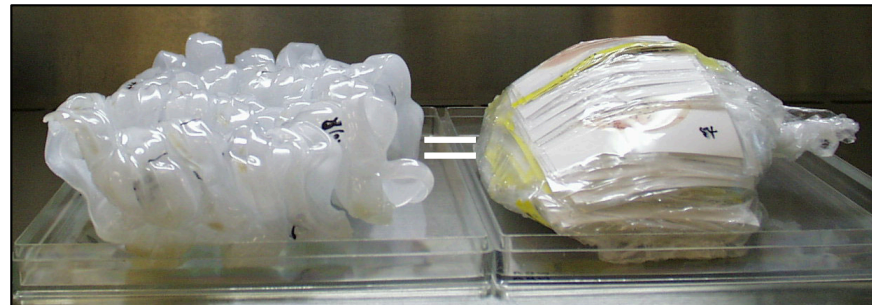


Small volume of waste

1/20
to agar plates

**20 autoclaved plates (2.2
litters)**

**400 autoclaved
SANITAKUNs sheets**



Characteristics 7:

Long validity

Sanita-kun	validity (M)
Aerobic count	24
Coliform	36
Yeast & Mold	24
Staph. aureus	24
E.coli/Coliform	36
Salmonella	36

Validity from manufacturing date in a stock condition of tight sealing in a refrigerator.

SANITA-KUN's field

Food processing

Convenience store's vender

Healthy foods

Poultry & Meat Industries

Fish Industries

Hotels & Restaurants

..... and Others

Cosmetic

Water supply

school lunch etc